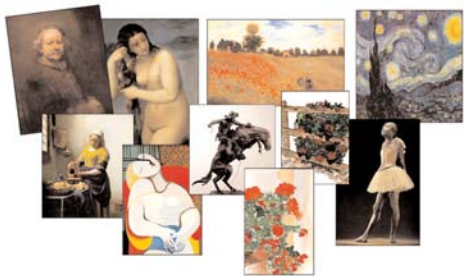


A DAY IN THE ARTS

Making art accessible to all

April 16, 2009 ADA0045 www.adayinthearts.com



WHO WAS ANDY WARHOL?

By David Johansen Auby

Everyone has seen one or more of Andy Warhol's famous paintings. But who was this somewhat mystical figure, and in what way did he put his mark on the world of art?

Andy Warhol (born Andrew Warhola) was an influential American artist known for his paintings, prints and movies. From the 1960s and until his death in 1987 Andy Warhol's famous paintings and art defined the visual art movement known as pop art.

When Andy Warhol was a child he became seriously ill and was often bed-ridden. This made

him an outcast among his school-mates. But the hours he spent in bed would ironically become his greatest inspiration for his art. When ill young Andrew collected pictures of movie stars and used his time painting - thus marking the start of an astonishing career.



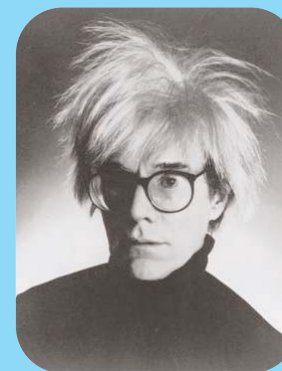
ANDY WARHOL, (American, 1928 - 1987), "100 Cans, 1962", Oil on canvas, 72 x 52", Collection Albright-Knox Art Gallery, Gift of Seymour H. Knox, Jr., 1963

Warhol showed an early interest and talent for creating art. This would lead him to his studies of commercial art at the School of Fine Arts in Pittsburgh. After his studies he moved to New York to become a magazine illustrator. During the 1950s Warhol became very successful in his work, especially by designing album covers and promotional mate-

WORD OF THE DAY

RELIEF PRINTING

Any printing process, as letterpress or flexography, in which the printing ink is transferred to paper or another printed surface from areas that are higher than the rest of the block.



"I loved working when I worked at commercial art and they told you what to do and how to do it and all you had to do was correct it and they'd say yes or no. The hard thing is when you have to dream up the tasteless things to do on your own."
- Andy Warhol

ART AEROBICS

Practice you drawing skills

From inside a car draw the rearview mirror and what's in it. Seven minutes drawing time. 🖍️

rials for RCA Records. Soon after, in the beginning of the 1960s he held his first art exhibitions.

Among his most famous work you will find paintings of Campbell's Tomato Soup, Coke bottles, and movie stars like Marilyn Monroe and Elisabeth Taylor. Warhol was attacked for "capitulating" to consumerism, but his pop art became wildly popular and controversial.

Looking back in time it has become obvious that Warhol marked a change in the modern art world. His work, his paintings and prints are still very popular. ➤



Andy Warhol, "Marilyn Monroe"

David Johansen Auby runs the Warhol Auctions website where you, among other things, can find Andy Warhol famous paintings and Andy Warhol bags

Article Source: <http://EzineArticles.com>



ART NEWS

SCULPTURE EXHIBIT

Washburn University in Topeka, Kansas announces a call to artists for the "Washburn University Outdoor Sculpture Exhibition", August 2009 to July 2010. Awards: \$1,000 honoraria per sculpture. Open to all sculptors 18 years of age and older. \$25 entry fee. Entry details at www.washburn.edu/sculpture2009. Deadline: May 31, 2009. <http://www.washburn.edu/sculpture2009/>

WATER COLOR ENTRIES

The **Philadelphia Water Color Society** announces a call to artists for the 109th Philadelphia Water Color Society Anniversary International Exhibition of Works on Paper, held October 3 - December 18, 2009 at the Philip and Muriel Berman Museum of Art at Ursinus College in Collegeville, Pennsylvania. Eligible media include: pastel, water media, drawings, original hand pulled prints. Download information from www.PWCSociety.org Deadline: June 22, 2009

Contemporary Art Exhibition: Sanford Biggers

The installation "Blossom" (below) by New York-based artist Sanford Biggers will be on view at the **Portland Art Museum** (Portland, OR) beginning May 16. This mixed media work incorporates a massive tree, a found piano, and Biggers' compositional reworking of Billie Holiday's 1939 anthem Strange Fruit, a harrowing portrayal of lynching in the American South. The song's poignant strains waft through the Museum's Jubitz Center galleries, calling visitors to the first Northwest presentation of Biggers' work. Both contemplative and theatrical, Blossom suggests a series of associations not only with Strange Fruit but also with Buddha



finding enlightenment under a tree and with issues of sculptural form.

ARSON

Two youths, aged 13 and 11, have admitted to setting fire to seventeen antique vehicles, including 15 cars, a fire truck and a motorcycle. <http://tinyurl.com/dkpleo>

ROBERT INDIANA AND THE STAR OF HOPE

The **Farnsworth** (Rockland, ME) is organizing a major exhibition on renowned American artist **Robert Indiana** drawn almost exclusively from his extensive holdings at his home and studio, the Star of Hope Oddfellows Lodge on the



island of Vinalhaven, Maine. The show explores the vast range of Indiana's work from the 1950s to the present, focusing on what he has done since 1978, when he moved permanently to the Star of Hope Lodge, a late nineteenth-century building listed on the National Register of Historic Places.

<http://tinyurl.com/ytwchy>

EXPRESSIONS OF VIENNA: MASTER DRAWINGS BY KLIMT AND SCHIELE

Gustav Klimt (1862-1918) and Egon Schiele (1890-1918) are two artists whose work is closely associated with the Viennese avant-garde during the early 20th century. Klimt, who was the first president of the Vienna Secession, the organization that promoted the integration of all art forms into a more aesthetic approach to life, was the looming figure in Viennese portraiture and mural painting. Schiele, whose career was much shorter than Klimt's, was deeply influenced early in his career by Klimt's work. Their work bridges the important transition in Vienna from 19th-century concerns and styles into the emerging Expressionism of the period following the First World War. This group of exquisite and important drawings by the leaders of art in Vienna a century ago is part of a larger gift of European art from the collection of University of Michigan professors Ernst Pulgram and Frances McSparran. The exceptional quality of these works is a tribute to Professor Pulgram's astute eye as he began collecting at the end of World War II. <http://www.umma.umich.edu>

MONTCLAIR ART MUSEUM

In response to the current sharp economic downturn, the Montclair Art Museum (MAM) has conducted a strategic review of its operations and capitalization, culminating with the recent adoption by its Board of Trustees of a long-range financial security plan. The plan calls for expense reductions, including reductions in hours for staff; a major capital campaign; and a deaccessioning campaign to support future art acquisitions.

An essential component of the



Gustav Klimt, "Woman Lying Half Draped", n.d., graphite on paper, Gift of the Ernst Pulgram and Frances McSparran Collection, 2007/2.88

Museum's mission is the care, interpretation, and strategic growth of its permanent collection. In order to continue to have funds for the purchase of new works of art, in fulfillment of its mission, the Museum has adopted and begun the implementation of a deaccession plan to increase funds for art acquisition. Objects for sale include the Museum's warehoused costume collection, rug collection, books, and selected works from storage that have rarely been displayed or are no longer consistent with the mission of the Museum. ➤